

The Challenge

Operating systems and applications generate massive amounts of event, performance and configuration data. Unfortunately this data is typically difficult to correlate, isolated on each machine, and often underutilized until needed in forensic investigations.

System Administrators and IT Managers can greatly benefit from a centralized system monitoring, alerting and reporting solution that works in real-time.

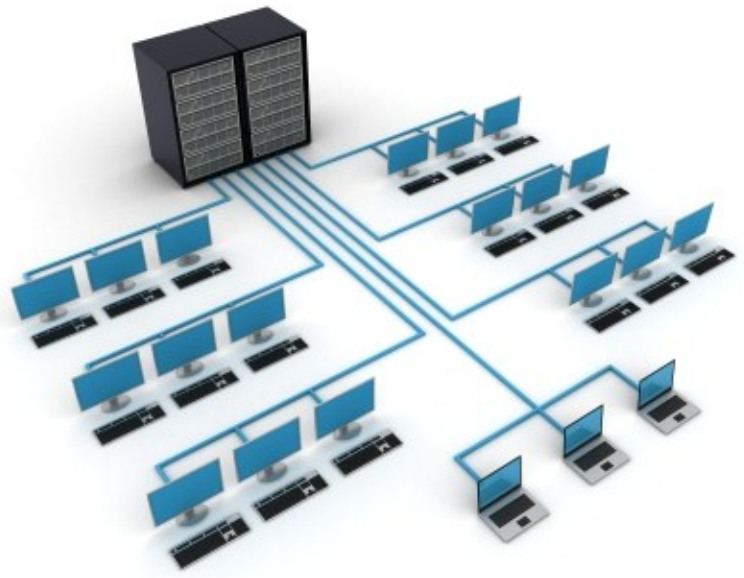
Proactively monitoring servers and event logs allows for prompt analysis and problem resolution resulting in smoother running IT operations, fortified security policies and satisfaction of regulatory compliance reporting such as SOX, HIPAA, PCI DSS and more.

The Solution

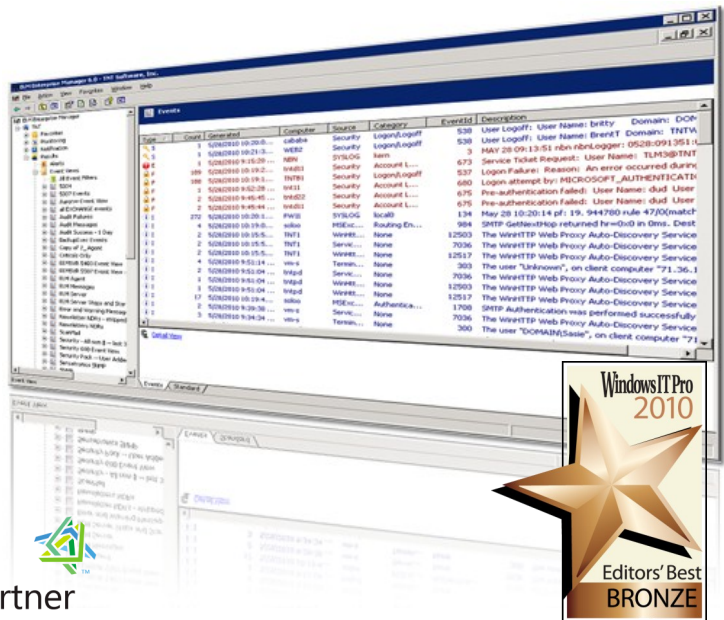
ELM Enterprise Manager elevates System Monitoring to real-time. This comprehensive enterprise class solution is designed to satisfy the centralized system monitoring and data management needs of today's fast paced, data intensive organizations.

Flexibility is the key when looking for a solution that will handle your monitoring needs from simple event log consolidation to full system performance monitoring including specific applications, processes and services.

Many utilities provide extensive monitoring capability, however a one-size-fits-all approach rarely works. Often you end up overpaying for more functionality than you will ever use or on the other end of the spectrum, getting by with using multiple different light-duty applications to accomplish your monitoring and system management goals.



ELM Enterprise Manager provides the unique ability to mix-and-match license types within a single product to accomplish the precise levels of system monitoring you need. After all, not all servers are created equal. Each license type provides a predefined level of monitoring capabilities so that you can pair them to the various types of servers, workstations or devices in your environment, stretching your budget dollars while optimizing your centralization and reporting capabilities. The comparison matrix sheet shows details on the features of the license types in ELM Enterprise Manager.



Not One More Tool, But One Tool That Does More...



Microsoft Partner

Silver Independent Software Vendor (ISV)



Monitoring Features

Comprehensive Log Management

- Windows Event Logs
- TCP and UDP Syslogs
- SNMP Traps
- Application/Flat Files

Health & Status Monitoring

- Windows Processes
- Windows Services
- System Performance
- System Inventory
- System Configurations
- WMI

Application & Internet Service Monitoring

- Windows Clusters
- Microsoft Exchange, SQL, IIS
- SMTP Gateways
- TCP Ports
- FTP Availability
- Web Content & Links

Alerting and Notifications

ELM Enterprise Manager includes a rich, robust Notification Engine that enables you to customize notification and corrective action to suit your organizational needs. You can have separate notification methods for different events, or a single notification method for all similar events. Different notification types can also run on different schedules, such as email during business hours and pager for after hours.

You could have one method that notifies a database administrator about important database related events, and another method for notifying a security administrator about important security related events. You could have yet another method that notifies System Admins when a critical server is down.

Notification Methods pass the full event information to the notification engine, which then forwards that information according to the methods selected. You may completely customize the message sent via the Notification Method. This is important when there are restrictions on message length, as in the case of a mobile pager.

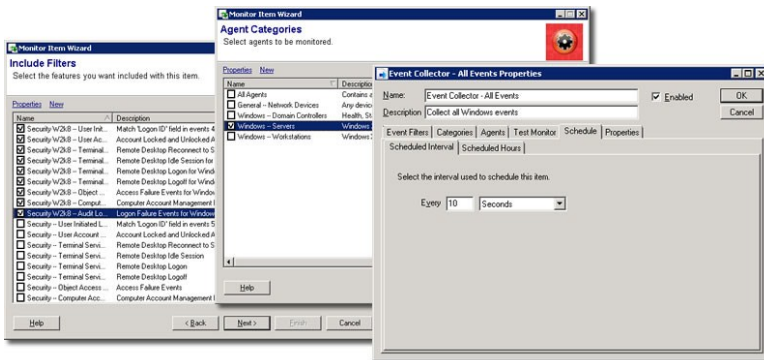
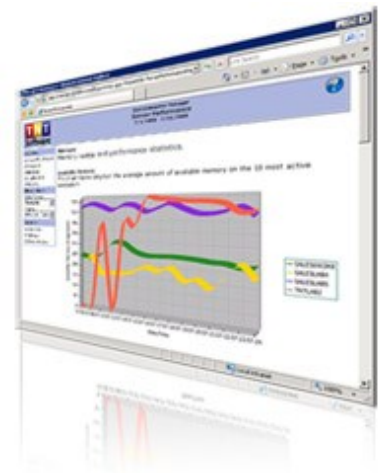
Flexible Reporting Options

ELM includes flexible reporting options to provide you detailed visibility of your critical event, health and status data.

The **ELM Publisher** is preconfigured to collect data and generate many of the most commonly requested management reports. ELM Publisher comes with a feature that automatically adds monitor items to agent categories based on the reports you want to generate. This makes it easy to assign a report to specific systems but also makes sure the data needed to produce the reports is being collected.

In addition, **ELM Editor** is a custom reporting engine providing a SQL query based tool for generating ad hoc and schedulable reports that can be distributed to any or all members of your team.

With ELM deployed, you can analyze event data in real-time and evaluate performance trends over days, weeks, or months.



We have been using ELM coming on two years now; it has become an integral part of our network management. I have an interactive window open of ELM constantly scrolling incoming events so that I can be proactive with network maintenance.

Because of our dependence on the product, it's uptime is paramount to our day to day activities, this requires top notch tech support. I have never dealt with a more competent responsive support staff. If all tech companies could have such terrific support my life as a network administrator would be ten times better. My hat goes off to the team at TNT."